

DIRECTORS AND EXECUTIVES

As of December 1, 2014

BOARD OF DIRECTORS (6)

| | |
|-------------------------|--|
| Shigeki Toma | Representative Director, President |
| Yukio Nakamura | Representative Director, Deputy President |
| J. Christopher Flowers* | Managing Director and Chief Executive Officer, J. C. Flowers & Co. LLC |
| Ernest M. Higa* | Chairman and Chief Executive Officer, Higa Industries Co., Ltd. |
| Shigeru Kani* | Former Director, Administration Department, The Bank of Japan, Specially Appointed Professor, Yokohama College of Commerce |
| Jun Makihara* | Chairman of the Board, Neoteny Co., Ltd. |

*Outside Directors

AUDIT & SUPERVISORY BOARD MEMBERS (3)

| | |
|-------------------|---|
| Shinya Nagata | Audit & Supervisory Board Member |
| Kozue Shiga* | Lawyer |
| Ryuichi Tomimura* | Executive Vice President, Director, SIGMAXYZ Inc. |

*Outside Audit & Supervisory Board Members

EXECUTIVE OFFICERS (25)

| | |
|-------------------|--|
| Shigeki Toma | Representative Director, President, Chief Executive Officer |
| Yukio Nakamura | Representative Director, Deputy President, Chief of Staff, Head of Corporate Staff Group, General Manager, Office of Financing Facilitation Management |
| Sanjeev Gupta | Senior Managing Executive Officer, Head of Individual Group |
| Michiyuki Okano | Senior Managing Executive Officer, Group Chief Information Officer, Head of Banking Infrastructure Group |
| Hitomi Sato | Senior Managing Executive Officer, Head of Institutional Group, General Manager, VBI Promotion Division |
| Shigeru Tsukamoto | Senior Managing Executive Officer, Chief Financial Officer, Head of Finance Group |
| Satoshi Koiso | Managing Executive Officer, General Manager, Corporate Planning Division |
| Yoshiaki Kozano | Managing Executive Officer, Head of Principal Transactions Sub-Group |
| Hideyuki Kudo | Managing Executive Officer, Chief Risk Officer, Head of Risk Management Group |
| Toru Myochin | Managing Executive Officer, Executive Officer in charge of Institutional Business, General Manager, Healthcare Finance Division |
| Hironobu Satou | Managing Executive Officer, Head of Global Markets Group |
| Shinichirou Seto | Managing Executive Officer, Executive Officer in charge of Institutional Business, Head of Institutional Business Sub-Group |
| Masashi Yamashita | Managing Executive Officer, Deputy Head of Individual Group, Head of Consumer Finance Sub-Group |
| Shigeto Yanase | Managing Executive Officer, Executive Officer in charge of Overseas Banking |
| Akira Hirasawa | Executive Officer, General Manager, Portfolio and Risk Management Division |
| Yasunobu Kawazoe | Executive Officer, General Manager, Institutional Credit Management Division |
| Takahisa Komoda | Executive Officer, General Manager, Human Resources Division |
| Tsukasa Makizumi | Executive Officer, General Manager, Specialty Finance Division, Head of Project Finance Department, Specialty Finance Division |
| Takako Masai | Executive Officer, Head of Markets Research Department, Markets Sub-Group |
| Yuji Matsuura | Executive Officer, Head of Markets Sub-Group |
| Nozomi Moue | Executive Officer, General Manager, Structured Risk Management Division |
| Masayuki Nankouin | Executive Officer, Head of Financial Control and Accounting Sub-Group |
| Nobuyasu Nara | Executive Officer, Executive Officer in charge of Institutional Business, General Manager, Osaka Branch |
| Eiji Shibazaki | Executive Officer, Head of Financial Institutions Sub-Group |
| Takashi Yoshikawa | Executive Officer, General Manager, Overseas Banking Division, Head of Overseas Business Development Department, Overseas Banking Division |

SENIOR ADVISOR (1)

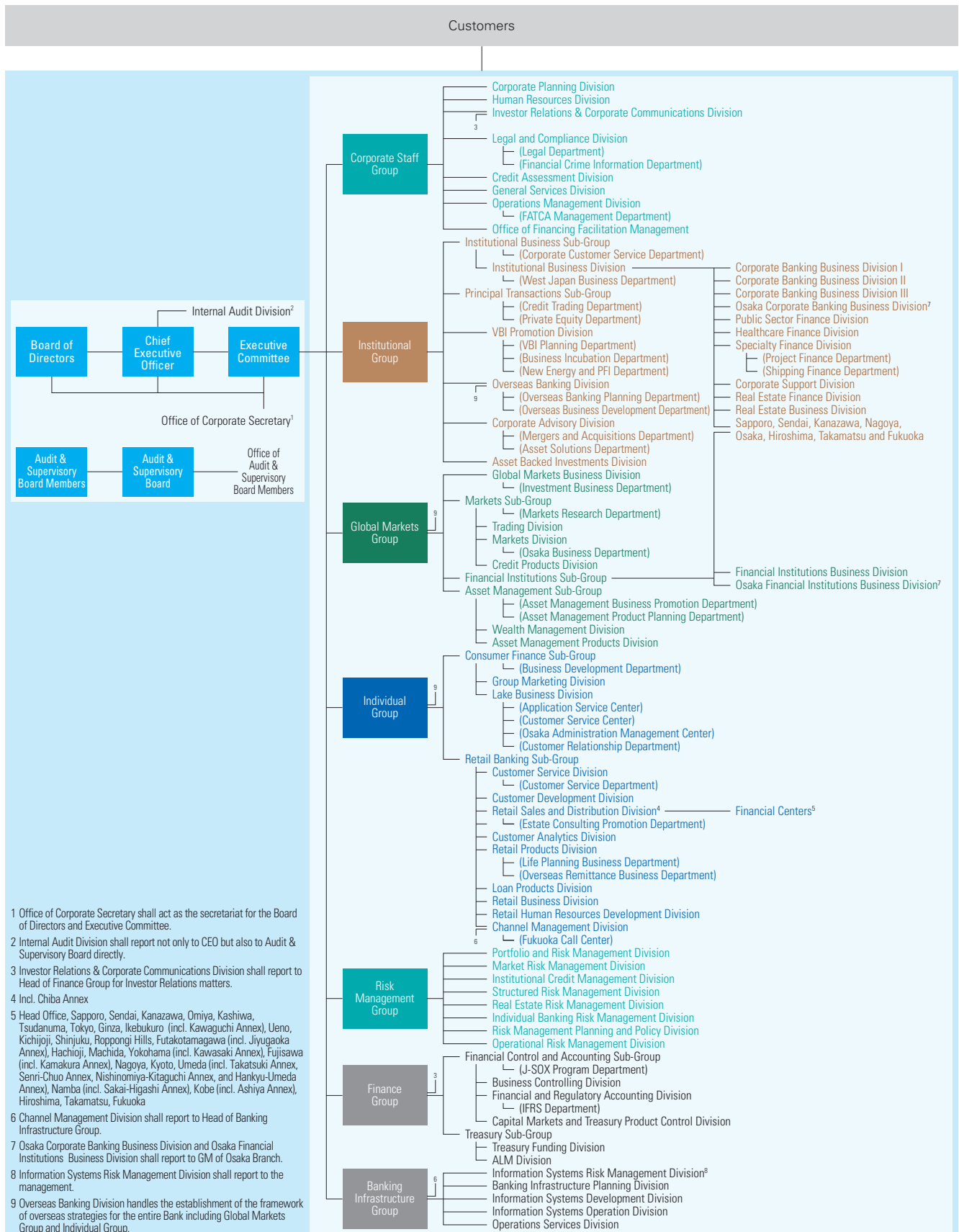
| | |
|--------------|--|
| David Morgan | Supervisory Board Member, HSH Nordbank AG, and Managing Director, Europe and Asia-Pacific, J.C. Flowers & Co. UK Ltd |
|--------------|--|

ADVISOR (1)

| |
|---------------|
| Yuji Tsushima |
|---------------|

ORGANIZATION

As of December 1, 2014



SUMMARY OF MAJOR EVENTS

| | | |
|------|-----------|---|
| 2000 | March | Launched as an innovative Japanese bank under new management and new ownership |
| | June | Changed name from The Long-Term Credit Bank of Japan, Limited (LTCB), to Shinsei Bank, Limited |
| 2001 | May | Commenced operations of Shinsei Securities Co., Ltd. |
| 2003 | April | Commenced operations of Shinsei Investment Management Co., Ltd. |
| 2004 | February | Listed the Bank's common shares on the First Section of the Tokyo Stock Exchange |
| | April | Converted the Bank's long-term credit bank charter to an ordinary bank charter |
| | May | Achieved one million retail accounts |
| | September | Acquired a controlling interest in APLUS Co., Ltd. |
| 2005 | March | Acquired a controlling interest in Showa Leasing Co., Ltd. |
| | May | Commenced operations of Shinsei International Limited |
| 2006 | July | Commenced resolution of public funds |
| 2007 | April | Achieved two million retail accounts |
| | December | Acquired a controlling interest in SHINKI Co., Ltd. |
| 2008 | January | Reached a mutual agreement with Seven Bank, Ltd. to share sales channels and develop products and services together |
| | February | Completed a tender offer bid for the Bank's common shares and a third-party allotment of new common shares of the Bank to the investor group led by J.C. Flowers & Co. LLC and affiliates |
| | September | Acquired GE Consumer Finance Co., Ltd. (Changed company name to Shinsei Financial Co., Ltd. on April 1, 2009) |
| 2009 | January | Launched <i>Shinsei Step Up Program</i> |
| | March | Concluded tender offer for the shares of common stock of SHINKI Co., Ltd. |
| | June | Opened first Shinsei Consulting Spots Launched <i>Two Weeks Maturity Deposit</i> |
| 2010 | June | Moved to a "Company with Board of Statutory Auditors" board model |
| | November | Announced business alliance with YES BANK LIMITED in Japan-India cross-border M&A business |
| 2011 | January | Commenced operations at new head office (Nihonbashi Muromachi) |
| | March | Issued new shares through international common share offering |
| | September | Assisted The Daito Bank, Ltd. in arranging its first syndicated loan |
| | October | Commenced unsecured personal card loan service under the Lake brand |
| 2012 | March | Established VBI Promotion Division in the Institutional Group |
| | April | Added "Shinsei APLUS Gold Card" and "Shinsei APLUS Card" to credit card line-up |
| | July | Established venture fund targeting mobile entertainment companies with gumi Inc. |
| | September | Balance of <i>PowerSmart</i> Home Mortgages exceeded one trillion yen |
| | October | Invested in "Fukushima Growth Industry Development Fund" Issued Fourth Series of Unsecured Callable Subordinated Bonds |
| | November | Provided nonrecourse loan for construction of lodgings for post-earthquake reconstruction workers in Miyagi Prefecture |

| | | |
|---|--|---|
| Financial Highlights | 2013 January | Participated in establishment of "Tokutei Mokuteki Gaisha Healthcare Infra Fund Kobe," which is privately placed real estate fund for individual investors where healthcare facilities constitute the underlying investment assets |
| | March | Started <i>Go Remit Overseas Remittance Service</i> |
| | | Syndicated project finance for mega solar project in the Eastern area of Hokkaido |
| | April | Stopped issuing long-term credit debentures (public sales issues) and long-term credit debentures for workers' property accumulation (<i>Zaikei issue</i>) |
| | | Established "Femto Growth Capital Investment Business Limited Liability Partnership" to invest in and provide support to early-stage companies in Japan's Internet sector |
| | May | Provided nonrecourse loan for special purpose company set up by Singapore-based Healthway Medical Development to purchase healthcare facilities in Japan |
| | | Arranged project finance for the construction of large-scale solar power plants in Mito city and Shiro-sato town in Ibaraki prefecture |
| | June | Issued unsecured callable subordinated bonds to retail investors in Japan |
| | | Changed Shinsei Step Up Program to further improve convenience for the Shinsei Bank Group's unsecured card loan and credit card customers |
| | July | Formed a business alliance with Culture Convenience Club Co., Ltd. to award T Points to users of Shinsei Bank's financial services |
| | | Formed Shinsei Principal Investments Group |
| | August | Initiated a pilot project aimed at discovering and nurturing "Innovators" in collaboration with Nomura Research Institute, Inc. |
| Relocated the Osaka Branch in order to enhance business functions | | |
| September | Arranged project financing for a mega solar project in Koshimizu, Shari District, Hokkaido Prefecture | |
| | Participated in a syndicated loan to a wood biomass power generation and wood pellet manufacturing business | |
| October | Invested in Private Finance Initiative Promotion of Japan (public-private infrastructure fund) | |
| | Entered ATM partnerships with "VIEW ALTTE" ATM, operated by East Japan Railway Company, and major convenience store chains such as LAWSON and FamilyMart | |
| November | Arranged project finance for mega solar business in Kikugawa City, Shizuoka Prefecture | |
| | Issued Sixth Series of Unsecured Callable Subordinated Bonds to Retail Investors | |
| Review of Operations | 2014 January | Launched " <i>PowerSmart Home Mortgage Anshin Pack W</i> " |
| | February | Arranged project finance for mega solar business in Kokonoemachi, Kusu-gun, Oita Prefecture |
| | | Commenced smartphone banking services through Shinsei <i>PowerDirect</i> |
| | March | Reached agreement to conclude the indemnity for losses on interest repayment with GE Japan Corporation |
| | | Participated in business revitalization support project using a debt-equity swap by Japan Finance Corporation |
| | April | Entered business partnership agreement on business succession support with Shinkin Central Bank |
| | | Launched account opening application for smartphones |
| | May | Concluded a business alliance agreement concerning business development support for small- and medium-sized enterprises entering into countries belonging to the Association of Southeast Asian Nations (ASEAN) with Forval Corporation |
| | | Entered into business alliance with Military Commercial Joint-Stock Bank, a major private commercial bank in Vietnam |
| | April | Terminated new loan transactions that utilize the long-term prime rate as the base rate |
| | | Extended new line of credit to wind power plant operation project in Sakata, Yamagata Prefecture |
| | May | Arranged project finance for mega solar projects in seven locations in Japan utilizing trust schemes |
| Established Japan Senior Living Partners Co., Ltd., a REIT asset management company aimed at founding a healthcare REIT | | |
| July | Launched NISA Plus, an investment trust application program | |
| | Issued terms for First Series of Unsecured Corporate Bonds (with Inter-Bond Pari Passu Clause) | |
| September | Arranged project finance for mega solar projects in Nasushiobara-shi, Tochigi Prefecture | |
| | Arranged project finance for mega solar projects in Atsuma-cho, Hokkaido | |
| October | Arranged project finance for mega solar projects in Hikari-shi, Yamaguchi Prefecture | |
| | Started home mortgage campaign to support reconstruction efforts following the Great East Japan Earthquake | |