

DIRECTORS AND EXECUTIVES

As of December 1, 2015

BOARD OF DIRECTORS (7)

Hideyuki Kudo	Representative Director, President
Yukio Nakamura	Representative Director, Deputy President
J. Christopher Flowers*	Managing Director and Chief Executive Officer, J.C. Flowers & Co. LLC
Ernest M. Higa*	Chairman President & Chief Executive Officer, Higa Industries Co., Ltd.
Shigeru Kani*	Former Director, Administration Department, The Bank of Japan, Specially Appointed Professor, Yokohama College of Commerce
Jun Makihara*	Director, Monex Group, Inc., Director, Philip Morris International Inc.
Ryuichi Tomimura*	Executive Vice President, Director, SIGMAXYZ Inc.

*Outside Directors

AUDIT & SUPERVISORY BOARD MEMBERS (3)

Shinya Nagata	Audit & Supervisory Board Member
Michio Shibuya*	Certified Public Accountant
Kozue Shiga*	Lawyer

*Outside Audit & Supervisory Board Members

EXECUTIVE OFFICERS (27)

Hideyuki Kudo	Representative Director, President and Chief Executive Officer
Yukio Nakamura	Representative Director, Deputy President, In charge of Corporate Staff Group, Finance Group and Banking Infrastructure Group
Sanjeev Gupta	Senior Managing Executive Officer, Advisor to President and Chief Executive Officer
Michiyuki Okano	Senior Managing Executive Officer, Group Chief Information Officer, Head of Banking Infrastructure Group
Shinichirou Seto	Senior Managing Executive Officer, Head of Institutional Group
Akira Hirasawa	Managing Executive Officer, Head of Corporate Staff Group, General Manager, Corporate Planning Division, General Manager, Office of Financing Facilitation Management
Yasunobu Kawazoe	Managing Executive Officer, Chief Risk Officer, Head of Risk Management Group
Yoshiaki Kozano	Managing Executive Officer, Deputy Head of Institutional Group
Masayuki Nankouin	Managing Executive Officer, Chief Financial Officer, Head of Finance Group, Head of Financial Control and Accounting Sub-Group
Hironobu Satou	Managing Executive Officer, Head of Global Markets Group
Masashi Yamashita	Managing Executive Officer, Head of Individual Group
Shigeto Yanase	Managing Executive Officer, Executive Officer in charge of Institutional Business
Naoto Hanada	Executive Officer, General Manager, Information Systems Development Division II
Shouichi Hirano	Executive Officer, General Manager, Institutional Business Planning Division
Takahisa Komoda	Executive Officer, General Manager, Human Resources Division
Tsukasa Makizumi	Executive Officer, Executive Officer in charge of Institutional Business
Takako Masai	Executive Officer, General Manager, Markets Research Division
Masanori Matsubara	Executive Officer, General Manager, Information Systems Development Division I
Yuji Matsuura	Executive Officer, Head of Markets Sub-Group
Nozomi Moue	Executive Officer, General Manager, Structured Risk Management Division
Nobuyasu Nara	Executive Officer, Executive Officer in charge of Institutional Business, General Manager, Osaka Branch
Eiji Shibazaki	Executive Officer, Executive Officer in charge of Institutional Business, General Manager, Financial Institutions & Public Sector Business Division
Yasufumi Shimada	Executive Officer, General Manager, Market Risk Management Division
Tetsuro Shimizu	Executive Officer, Head of Individual Business Sub-Group
Satoshi Suzuki	Executive Officer, General Manager, Banking Infrastructure Planning Division
Masayoshi Tomita	Executive Officer, Head of Individual Planning Sub-Group
Takashi Yoshikawa	Executive Officer, Head of Overseas Banking Planning Department, Corporate Planning Division

SENIOR ADVISOR (1)

David Morgan	Supervisory Board Member, HSH Nordbank AG, and Managing Director, Europe and Asia-Pacific, J.C. Flowers & Co. UK Ltd
--------------	--

SPECIAL ADVISOR (1)

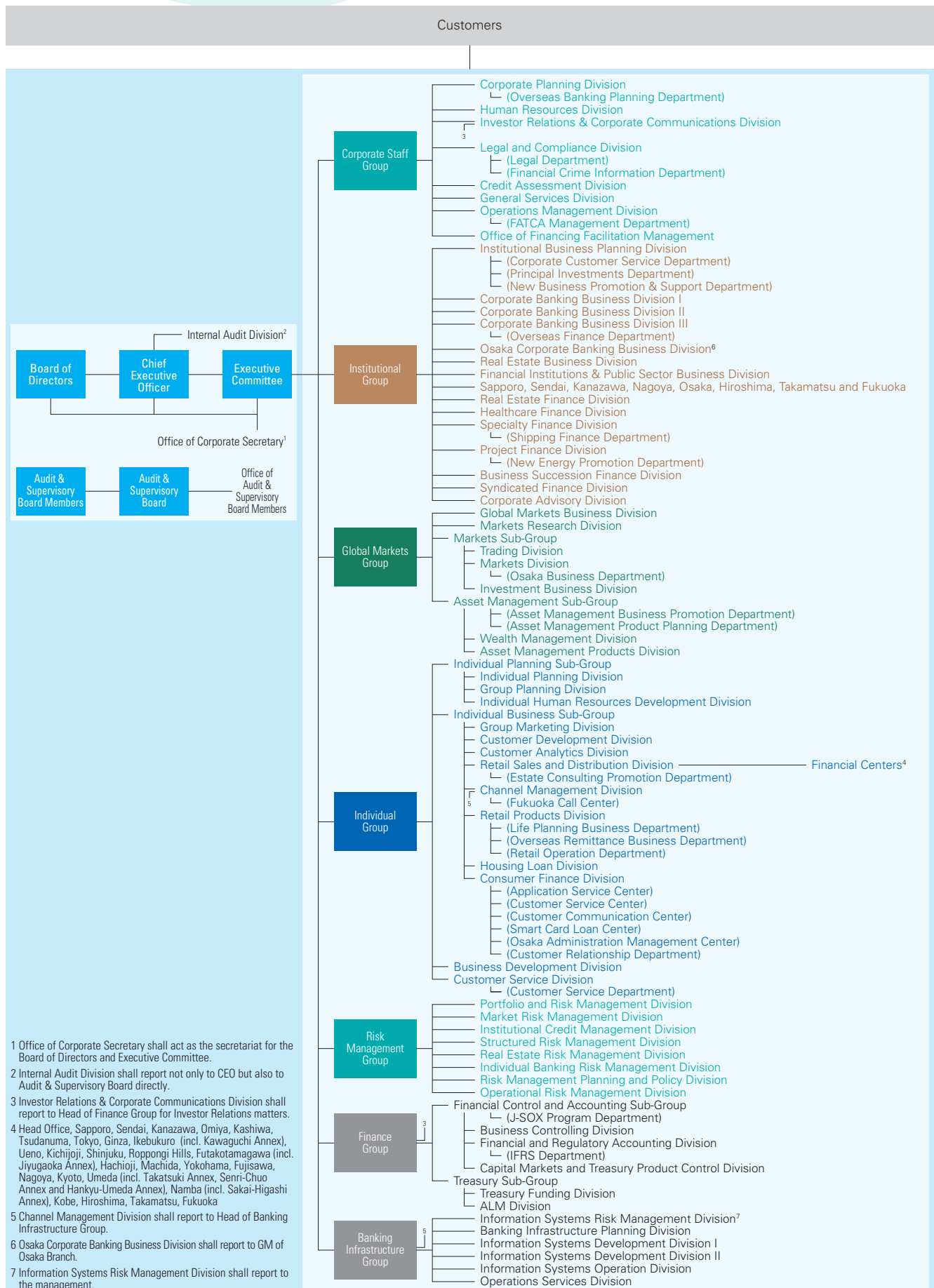
Shigeki Toma

ADVISOR (1)

Yuji Tsushima

ORGANIZATION

As of December 1, 2015



Financial Highlights

Message from the Management

Overview of the Second Medium-Term Management Plan (MTMP)

Review of Operations

Management Structure

Data Section

SUMMARY OF MAJOR EVENTS

	Financial Highlights	Message from the Management	Overview of the Second Medium-Term Management Plan (MTMP)	Review of Operations	Management Structure Summary of Major Events	Data Section
2000	March	Launched as an innovative Japanese bank under new management and new ownership				
	June	Changed name from The Long-Term Credit Bank of Japan, Limited (LTCB), to Shinsei Bank, Limited				
2001	May	Commenced operations of Shinsei Securities Co., Ltd.				
2003	April	Commenced operations of Shinsei Investment Management Co., Ltd.				
2004	February	Listed the Bank's common shares on the First Section of the Tokyo Stock Exchange				
	April	Converted the Bank's long-term credit bank charter to an ordinary bank charter				
	May	Achieved one million retail accounts				
	September	Acquired a controlling interest in APLUS Co., Ltd.				
2005	March	Acquired a controlling interest in Showa Leasing Co., Ltd.				
2006	July	Commenced resolution of public funds				
2007	April	Achieved two million retail accounts				
	December	Acquired a controlling interest in SHINKI Co., Ltd.				
2008	February	Completed a tender offer bid for the Bank's common shares and a third-party allotment of new common shares of the Bank to the investor group led by J.C. Flowers & Co. LLC and affiliates				
	September	Acquired GE Consumer Finance Co., Ltd. (Changed company name to Shinsei Financial Co., Ltd. on April 1, 2009)				
2009	January	Launched <i>Shinsei Step Up Program</i>				
	March	Concluded tender offer for the shares of common stock of SHINKI Co., Ltd.				
	June	Launched <i>Two Weeks Maturity Deposit</i>				
2010	June	Moved to a "Company with Board of Statutory Auditors" board model				
2011	January	Commenced operations at new head office (Nihonbashi Muromachi)				
	March	Issued new shares through international common share offering				
	October	Commenced unsecured personal card loan service under the Lake brand				
2012	April	Added "Shinsei APLUS Gold Card" and "Shinsei APLUS Card" to credit card line-up				
	September	Balance of <i>PowerSmart</i> Home Mortgages exceeded one trillion yen				
	October	Invested in "Fukushima Growth Industry Development Fund" Issued Fourth Series of Unsecured Callable Subordinated Bonds				
	November	Provided nonrecourse loan for construction of lodgings for post-earthquake reconstruction workers in Miyagi Prefecture				
	December	Issued Sixth Series of Unsecured Callable Subordinated Bonds to Retail Investors				
2013	March	Started <i>Go Remit Overseas Remittance Service</i>				
	April	Stopped issuing long-term credit debentures (public sales issues) and long-term credit debentures for workers' property accumulation (<i>Zaikai issue</i>) Provided nonrecourse loan for special purpose company set up by Singapore-based Healthcare Medical Development to purchase healthcare facilities in Japan				
	May	Issued unsecured callable subordinated bonds to retail investors in Japan				
	June	Changed Shinsei Step Up Program to further improve convenience for the Shinsei Bank Group's unsecured card loan and credit card customers Formed a business alliance with Culture Convenience Club Co., Ltd. to award T Points to users of Shinsei Bank's financial services				
	July	Formed Shinsei Principal Investments Group				
	August	Relocated the Osaka Branch in order to enhance business functions				
	October	Invested in Private Finance Initiative Promotion of Japan (public-private infrastructure fund) Entered ATM partnerships with "VIEW ALTTE" ATM, operated by East Japan Railway Company, and major convenience store chains such as LAWSON and FamilyMart				
2014	January	Launched " <i>PowerSmart</i> Home Mortgage Anshin Pack W"				
	February	Commenced smartphone banking services through Shinsei <i>PowerDirect</i> Reached agreement to conclude the indemnity for losses on interest repayment with GE Japan Corporation				
2015	March	Concluded a business alliance agreement concerning business development support for small- and medium-sized enterprises entering into countries belonging to the Association of Southeast Asian Nations (ASEAN) with Forval Corporation Entered into business alliance with Military Commercial Joint-Stock Bank, a major private commercial bank in Vietnam				
	April	Extended new line of credit to wind power plant operation project in Sakata, Yamagata Prefecture Arranged project finance for mega solar projects in seven locations in Japan utilizing trust schemes				
	May	Launched NISA Plus, an investment trust application program				
	July	Issued terms for First Series of Unsecured Corporate Bonds (with Inter-Bond Pari Passu Clause)				
2015	January	" <i>PowerSmart</i> Home Mortgage Loan Anshin Pack W" awarded the Nikkei Veritas Award in "2014 Nikkei Superior Products and Services Awards" Entered a business alliance with RHB Bank Berhad, a commercial bank in Malaysia				
	February	Made an equity investment in the "Kansai Science City ATR-Venture NVCC Investment Partnership" Shinsei Bank's Annual Report 2014 awarded an award for Excellence in the "17th Nikkei Annual Report Awards"				
	March	Participated as a strategic investor in "AIGF," an ASEAN region focused private equity fund Arranged a syndicated loan for a wood biomass power generation business in Akita-shi, Akita Prefecture				
	April	Added the "TOKYU Group Plan" as part of " <i>PowerSmart</i> Home Mortgage Anshin Pack W" services, increasing the services available to customers Nippon Wealth Limited, a Restricted Licence Bank acquired a banking business license from the Hong Kong Monetary Authority				
	May	Shinsei Property Finance entered business alliances with Tokyu Livable and Tokyu Housing Lease Corporation to offer housing loans to overseas investors Japan Senior Living Partners Co., Ltd. established a REIT investment company specializing in healthcare facilities Acquired real estate nonrecourse loan portfolio from GE Japan Corporation				
	July	Launched a remote sign language translation service at Shinsei Financial Centers Launched "Overseas Prepaid Card GAICA" Japan Senior Living Partners Co., Ltd., listed on the real estate investment trust securities market of the Tokyo Stock Exchange, Inc.				
	September	Concluded an overseas investor inbound investment business alliance agreement with URLinkage Co., Ltd.				
	October	Commenced full scale operations of Nippon Wealth Limited, a Restricted Licence Bank, a new wealth management financial institution for individual customers in Hong Kong Awarded first place in the 11th "Nikkei Retail Strength Survey" conducted by the Nikkei				
	November	Launched "Shinsei Bank Smart Card Loan Plus," a new card loan service				