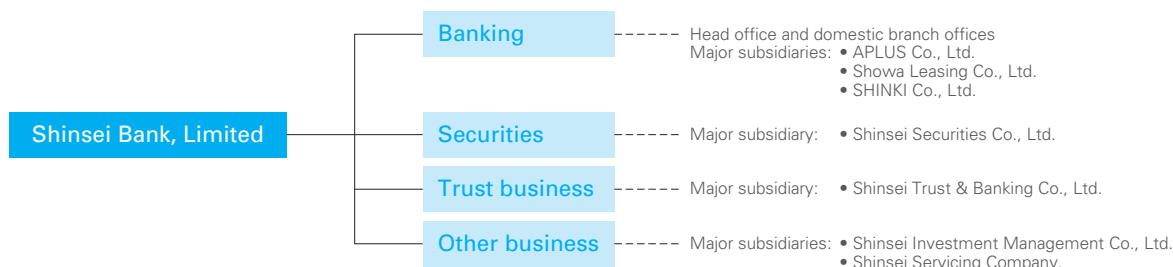


CORPORATE INFORMATION

SHINSEI BANK GROUP

AS OF MARCH 31, 2008

As of March 31, 2008, the Shinsei Bank Group consisted of Shinsei Bank, Limited, 204 subsidiaries (comprising 104 consolidated companies including APLUS Co., Ltd. and Showa Leasing Co., Ltd. and 100 unconsolidated subsidiaries) and 30 affiliated companies. The Shinsei Bank Group is an integrated financial services group which engages principally in the banking business and conducts securities, trust and other businesses.



MAJOR SUBSIDIARIES AND AFFILIATES

AS OF MARCH 31, 2008

Name	Location	Main business	Capital (Millions of yen unless otherwise specified)	Established (Acquired)	Equity stake held by Shinsei Bank and consolidated subsidiaries (%)			
					Equity stake held by Shinsei Bank	Equity stake held by consolidated subsidiaries of Shinsei Bank	Equity stake held by consolidated subsidiaries of Shinsei Bank	
Major Domestic Subsidiaries								
Shinsei Property Finance Co., Ltd.	Tokyo, Japan	Real estate collateral finance	¥ 250	1959.5	100.0%	100.0%	—%	
Shinsei Information Technology Co., Ltd.	Tokyo, Japan	Information technology	100	1983.8	100.0	100.0	—	
Shinseigin Finance Co., Ltd.	Tokyo, Japan	Finance	10	1993.1	100.0	100.0	—	
Shinsei Trust & Banking Co., Ltd.	Tokyo, Japan	Trust banking	5,000	1996.11	100.0	100.0	—	
Shinsei Securities Co., Ltd.	Tokyo, Japan	Securities	7,000	1997.8	100.0	100.0	—	
Chowa Tatemono Co., Ltd.	Tokyo, Japan	Real estate leasing	10	1997.8	100.0	100.0	—	
Shinsei Servicing Company	Tokyo, Japan	Servicing business	500	2001.10	100.0	—	100.0	
Shinsei Investment Management Co., Ltd.	Tokyo, Japan	Investment trust and discretionary investment advisory	495	2001.12	100.0	100.0	—	
APLUS Co., Ltd.	Osaka, Japan	Installment credit	40,000	(2004.9)	74.0	—	74.0	
Zen-Nichi Shinpan Co., Ltd.	Okayama, Japan	Installment credit	1,000	(2006.3)	97.3	—	97.3	
Showa Leasing Co., Ltd.	Tokyo, Japan	Leasing	24,300	(2005.3)	96.4	96.4	—	
Showa Auto Rental & Leasing Co., Ltd.	Tokyo, Japan	Leasing	300	(2005.3)	100.0	—	100.0	
SHINKI Co., Ltd.	Tokyo, Japan	Financing for individuals and small businesses	16,709	(2007.12)	67.7	67.7	—	
Major Overseas Subsidiaries								
Shinsei Bank Finance N.V.	Curaçao, Netherlands Antilles	Finance	\$2.1 million	1976.3	100.0%	100.0%	—%	
Shinsei International Limited	London, UK	Securities	£3 million	2004.9	100.0	100.0	—	
Shinsei Finance (Cayman), Limited	Grand Cayman, Cayman Islands	Finance	\$795.25 million	2006.2	100.0	100.0	—	
Shinsei Finance II (Cayman), Limited	Grand Cayman, Cayman Islands	Finance	\$715.35 million	2006.3	100.0	100.0	—	
Major Affiliates Accounted for Using the Equity Method								
Jih Sun Financial Holding Co., Ltd.	Taipei, Taiwan	Finance	NT\$26,124 million	(2002.2)	32.9%	—%	32.9%	
Raffia Capital Co., Ltd.	Tokyo, Japan	Private equity fund management	¥ 10	2002.7	50.0	50.0	—	
Hillcot Holdings Limited	Hamilton, Bermuda	Holding company	\$24,000	2002.11	33.7	33.7	—	